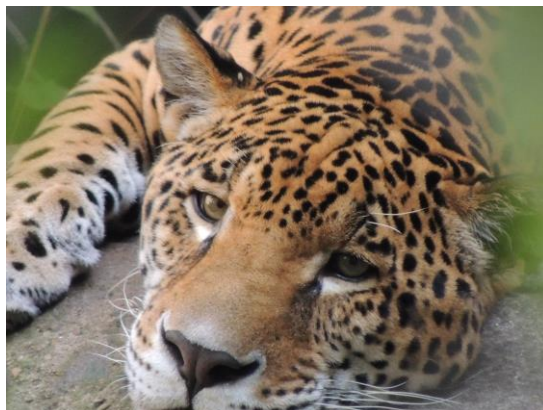


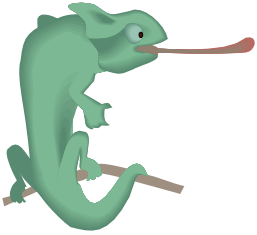


## Choose an EdZoocational Program at your Erie Zoo

Spring is a great time for a visit to your Erie Zoo. Your students' understanding of the natural world will grow even more when you couple a visit to your Erie Zoo with an EdZoocational program or tour.

- Choose a program from this packet – please note that some programs have limited availability dates.
- **To reserve your program and schedule group admission** - Contact the Education Department 814-864-4091 x 247 or email at [kbowes@eriezoo.org](mailto:kbowes@eriezoo.org). Completion of a group admission registration form will ensure that you receive the best discount for admission.
- Plan ahead as we book quickly for May and June.





# Reptiles Rule



Only Available April 25 through June 6, 2018  
at your Erie Zoo

Whether they have 4 legs or no legs, reptiles are amazing animals. During this adventure, you will meet our reptiles, learn their characteristics and discover the unique niche they fill in our world. Let our cold-blooded residents show you why they are in a class all their own!

You must **pre-register** by calling the Education Department to reserve a presentation for your group. The program fee for a 30 minute “Reptiles Rule” Interactive Classroom Session is \$35 per program. The program fee is *in addition to* your admission cost and covers materials and instructor’s costs. Programs are limited to 25 students per session with up to two sessions scheduled in the same one-hour time slot.

Please call (814) 864-4091 Ext. 247 or email [kbowes@eriezoo.org](mailto:kbowes@eriezoo.org) to schedule. The Proposed PA Academic Standards addressed by each presentation are listed with the topic description.

**For Pre-K through 1<sup>st</sup> Grade:** From turtles to snakes and alligators to lizards, reptiles are a unique group. Discover how they are different from other animals through hands-on activities, reptile biofacts and by meeting a reptile resident.

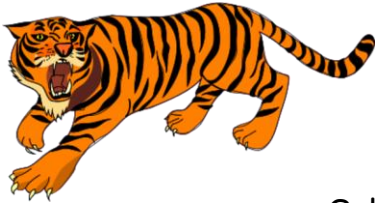
PA Standards for Science, Technology and Engineering: 3.1.K.A5; 3.1.1.A1; 3.1.PK.A.2; 3.1.K.A5

**2<sup>nd</sup> Grade through 4<sup>th</sup> Grade:** Slimy skin or dry scales? It is often difficult to tell reptiles and amphibians apart. Using hands-on activities and animal examples, we will clear up the confusion.

PA Standards for Science, Technology and Engineering: 3.1.4.A1; 3.1.4.A2; 3.1.4.A5; 3.1.4.B1; 3.1.4.B1; 3.1.3.C2; 3.1.4.C2

**5<sup>th</sup> Grade through 8<sup>th</sup> Grade:** This is a call to order! Reptile orders, that is. Investigate the four orders of reptiles and learn to tell them apart through instruction and activities. Then, using what you learned, identify the reptile residents of the Erie Zoo.

PA Standards for Science, Technology, and Engineering: 3.1.6.A1; 3.6.A5; 3.1.7.B5



# Amazing Adaptations!



Only Available April 25 through June 6, 2018 at your Erie Zoo

You must **pre-register** by calling the Education Department to reserve a presentation for your group. The program fee for an hour-long Amazing Adaptations Program with tour is \$50 per session and \$40 for each **additional** class from the same school on the same day. Short on time? You can schedule just the half-hour Adaptations Interactive Classroom Session for \$35 per program. The program fee is **in addition to** your admission cost and covers materials and instructor's costs. Programs are limited to 25 students per session with up to two sessions scheduled in the same one-hour time slot. Please call (814) 864-4091 Ext. 247 to schedule. The Proposed PA Academic Standards addressed by each presentation are listed with the topic description.

## **Pre-K through 1<sup>st</sup> Grade: Zoo Adaptation Curiosities**

Our youngest students will explore what animals have in common and what makes animals different. Students will identify the parts of the plant and distinguish between non-living and living items. They will learn through self-discovery as they explore different education stations through touch, site and sound. All programs include a live animal visitor. One hour programs also include a zoo tour to compare and discuss animal and plant adaptations.

Early Childhood Standards: 15.1.1, 15.2.1, 3.1a.1, 1.3a.5, 3.1a.8

## **2<sup>nd</sup> Grade through 4<sup>th</sup> Grade: Lean On Me Adaptations**

Students will learn how plants and animals depend upon each other for survival and they will investigate how adaptations of plants and animals help them to survive in their habitats. Animal visitors and bio-facts will assist students in the discovery of the similarities and differences between animals and plants. One hour programs also include a zoo tour to compare and discuss animal and plant adaptations.

PA Standards for Environment and Ecology: 4.5.3.D., 4.5.4.D

PA Standards for Science and Technology: 3.1.3.A1., 3.1.3.A2., 3.1.3.C1., 3.1.3.C2., 3.1.4.A1., 3.1.4.A2., 3.1.4.C2.

## **5<sup>th</sup> Grade through 8<sup>th</sup> Grade: Survival Adaptation Secrets**

Students will be able to explain the relationship between adaptation and ability for survival for both plants and animals. Students will compare and contrast physical and behavior adaptations including camouflage, warning coloration, and mimicry. They will investigate how all life depends upon energy from the sun and the role of producers, consumers, decomposers, predators and prey in an ecosystem. Knowledge and understanding will grow with hands-on, thought provoking activities, biofacts and live plants and animals. One hour programs also include a zoo tour to compare and discuss animal and plant adaptations.

PA Standards for Environment and Ecology: 4.1.5.A., 4.4.5.C., 4.1.7.A

PA Standards for Science and Technology: 3.1.5.A2., 3.1.6.A2., 3.1.5.C1., 3.1.7.A2., 3.1.6.A5.



# Endangered Species!

Only Available April 25 through June 6, 2018 at your Erie Zoo

**Program specifically designed for 9<sup>th</sup>-12<sup>th</sup> grade**

You must **pre-register** by calling the Education Department to reserve a presentation for your group. The program fee for an hour-long Endangered Species Program with zoo tour of our endangered animal exhibits is \$50 per session and \$40 for each **additional** class from the same school on the same day. Short on time? You can schedule just the half-hour Endangered Species Classroom Session for \$35 per program. In this class, we will discuss why animals become endangered and meet two-three live animal visitors. The program fee is **in addition to** your admission cost and covers materials and instructor's costs. Programs are limited to 25 students per session. Please call (814) 864-4091 Ext. 247 or email [kbowes@eriezoo.org](mailto:kbowes@eriezoo.org) to schedule. The Proposed PA Academic Standards addressed by each presentation are listed with the topic description.

PA Standards for Environment and Ecology: 4.1.10.B; 4.1.10.D; 4.1.10E

## Other Offerings

**Customized programs can be created to meet specific needs for our older or special needs students. Just ask.**

### Tips for Planning Programs for Special Needs Populations:

- Tell us in advance, the general functioning level of your group as well as your goals for the program.
- Inform us of any special adaptations your group may require or may be bringing (i.e. voice amplification, tactile needs or tactile defensiveness, special seating requirements, assistive devices.)
- Limit your group size to allow for the additional space that wheelchairs may require and also to suit the attention spans and patience level of your group members. Feel free to give us guidance in the instructional methods that are best suited for your group.

### New PECS Books for Autistic or Non-Verbal Students

Help your students play a role in the decision making, allow them to share their needs and communicate more effectively during your zoo visit by borrowing one or more of the PECS books from your Erie Zoo Gift Shop. All that is required is a valid ID for the responsible adult, and your promise to return it before you leave the zoo for the day. Fifteen books are available so that a class can be accommodated. Please help us spread the word about this wonderful resource to your families for their personal visits to their Erie Zoo.

